



FACILITIES PLAN OVERVIEW



Our Water...Our Future

Background

- Sewer pipes carry both wastewater and stormwater to a water protection facility.
- In many parts of St. Joseph, the mixed wastewater and stormwater flow together in a single pipe.
 - *Combined Sewer System*



Background, continued

- Over 700 communities across the country have a combined sewer system.
- During a heavy rain, the pipes may get too full and start to overflow into the Missouri River.
 - ▣ *Combined Sewer Overflow (CSO).*

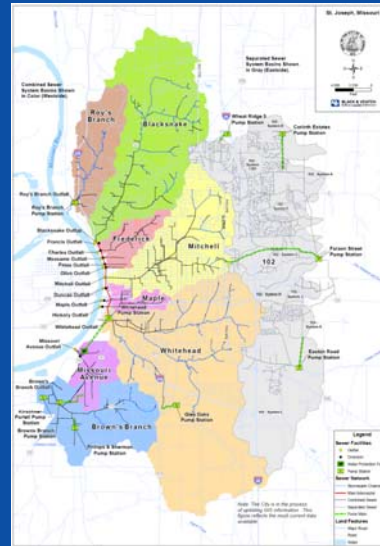


Facilities Plan

- Three different, but related, assessment studies are being conducted:
 - ▣ *Combined Sewer Overflow Control Facilities Assessment*
 - ▣ *Stormwater Detention Basin Facilities Assessment*
 - ▣ *Water Protection Facilities Assessment*
- Public involvement and educational activities will be conducted throughout the plan implementation.

Eastside Overview

- East of the Belt Highway, one pipe system carries wastewater and another separate pipe system carries stormwater.
 - *Separate Sewer System (SSS).*



5/19/2009

Our Water...Our Future 5

Eastside Service Area Assessment

- Establish assessment criteria for potential Eastside Water Protection Facility (WPF).
- Identify and evaluate sites for potential Eastside WPF.
- Evaluate and select treatment process for potential Eastside WPF.
- Evaluate conveyance requirements.
- Determine life cycle costs of alternatives.

5/19/2009

Our Water...Our Future 6

20-Year Implementation Plan

- Integrated plan for CSO Control, Water Protection Facility Improvements, and Stormwater Detention facilities.
- Prioritized based on the City's financial capacity, goals, and objectives.
- Will result in specific design and construction projects.

5/19/2009

Our Water...Our Future 7



QUESTIONS?



Our Water...Our Future